

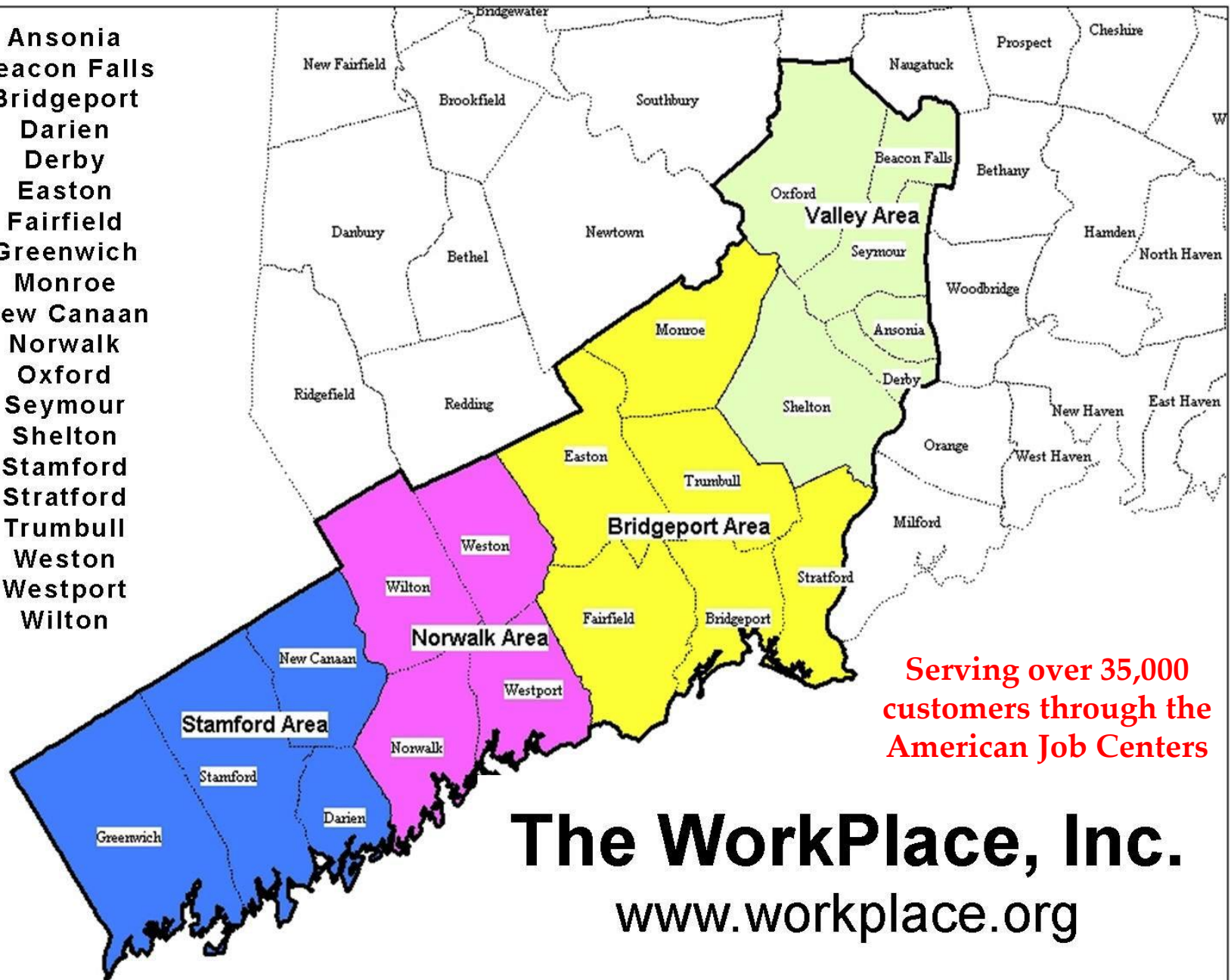
THE WORKPLACE

Southwestern Connecticut's Regional Workforce Investment Board

Adrienne Parkmond, Esq.
Chief Operating Officer
aparkmond@workplace.org
203.610.8506

Southwest Connecticut Work Investment Area

Ansonia
Beacon Falls
Bridgeport
Darien
Derby
Easton
Fairfield
Greenwich
Monroe
New Canaan
Norwalk
Oxford
Seymour
Shelton
Stamford
Stratford
Trumbull
Weston
Westport
Wilton



**Serving over 35,000
customers through the
American Job Centers**

The WorkPlace, Inc.
www.workplace.org

Programs and Services

Add Us In / Diversity Works

blueGreen Research Institute

Career Coach

Dress for Success

Engage Staffing Agency

Environmental Job Training Program

Face Forward Grant (Youth Re-entry)

H1-B Technical Skills Healthcare Grant

Health Professions Opportunities Grant

Homeless Veterans Reintegration Program

Incarcerated Veterans Transition Program

Mortgage Crisis Job Training Program

Platform to Employment (P2E)

Supportive Services for Veterans and Families

Training to Work (Adult Re-Entry)

Jobs First Employment Services

Summer Youth Employment Program

Step Up

WIOA – Adult and Dislocated Workers

YouthWorks

Who are we serving?

Dislocated Workers

Incumbent Workers

Low Income Individuals

Long Term Unemployed

People With Disabilities

Veterans & Military Spouses

Re-Entry Population

At Risk Youth

Additional Supports

Mortgage Assistance Support

Rapid Rehousing for Veterans

Food Pantry in Bridgeport AJC

Community Resource Center in
Bridgeport AJC

Disability Resource Center

Industries Served

Health Care

Environmental

Manufacturing

Transportation / Logistics

Retail

VALUE ADDED SERVICES



MOBILE TRAINING LAB



DRESS FOR SUCCESS

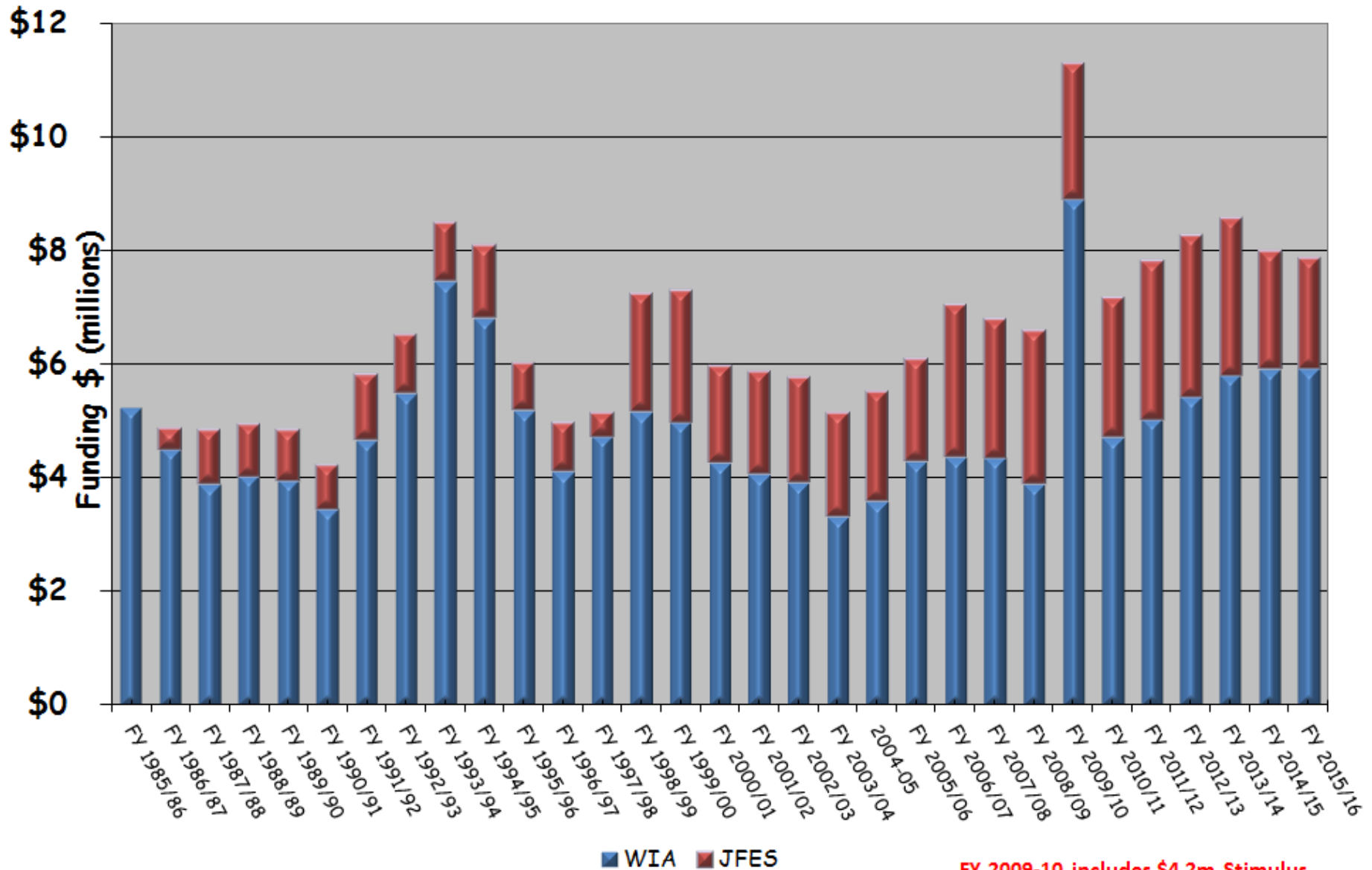


FOOD PANTRY

JTPA/WIA/WIOA & W+W/JFES Funding Received

FY 1985 to FY 2016

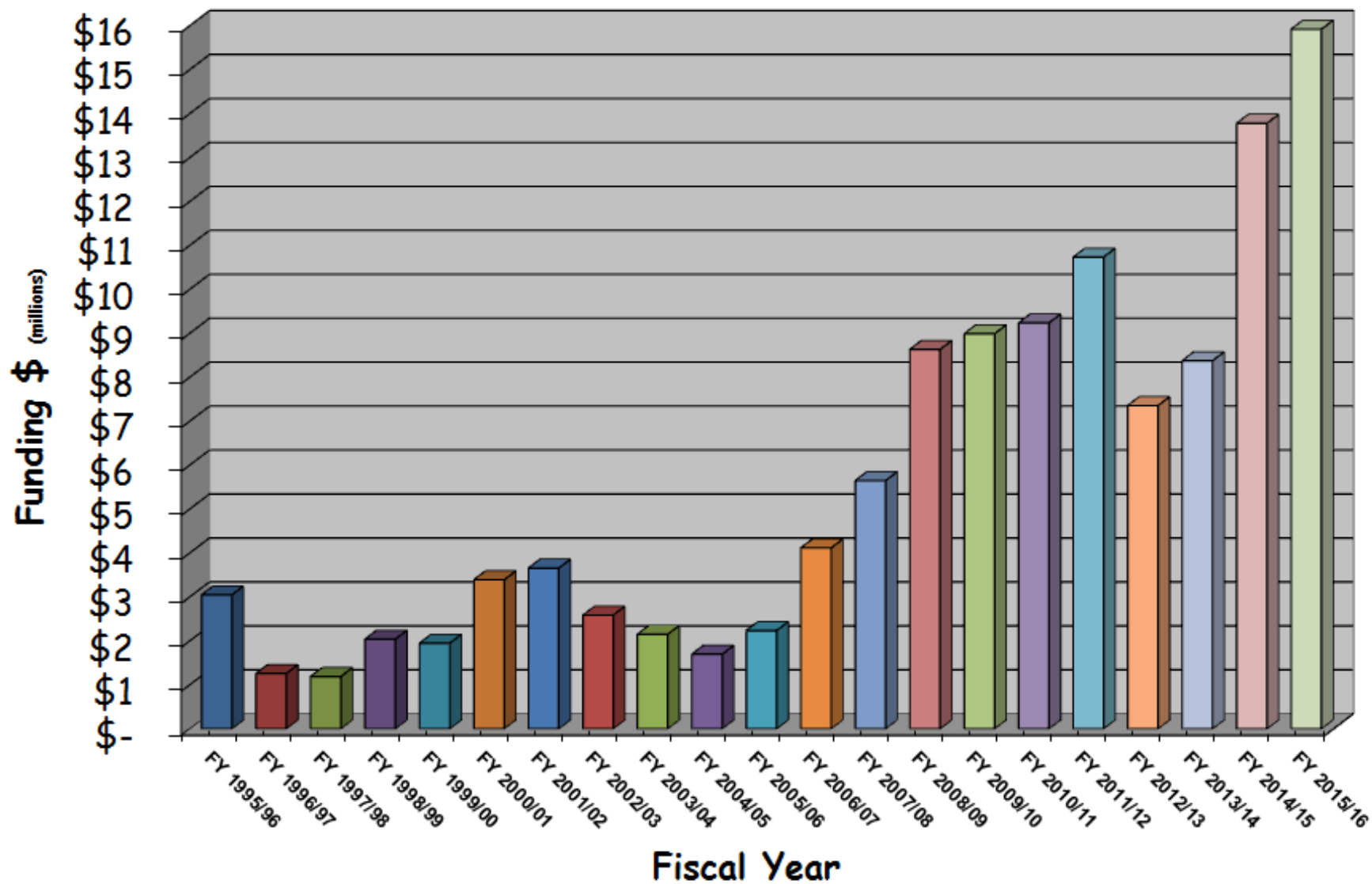
\$202.3 million



Competitive Public Funding

FY 1995 to FY 2016

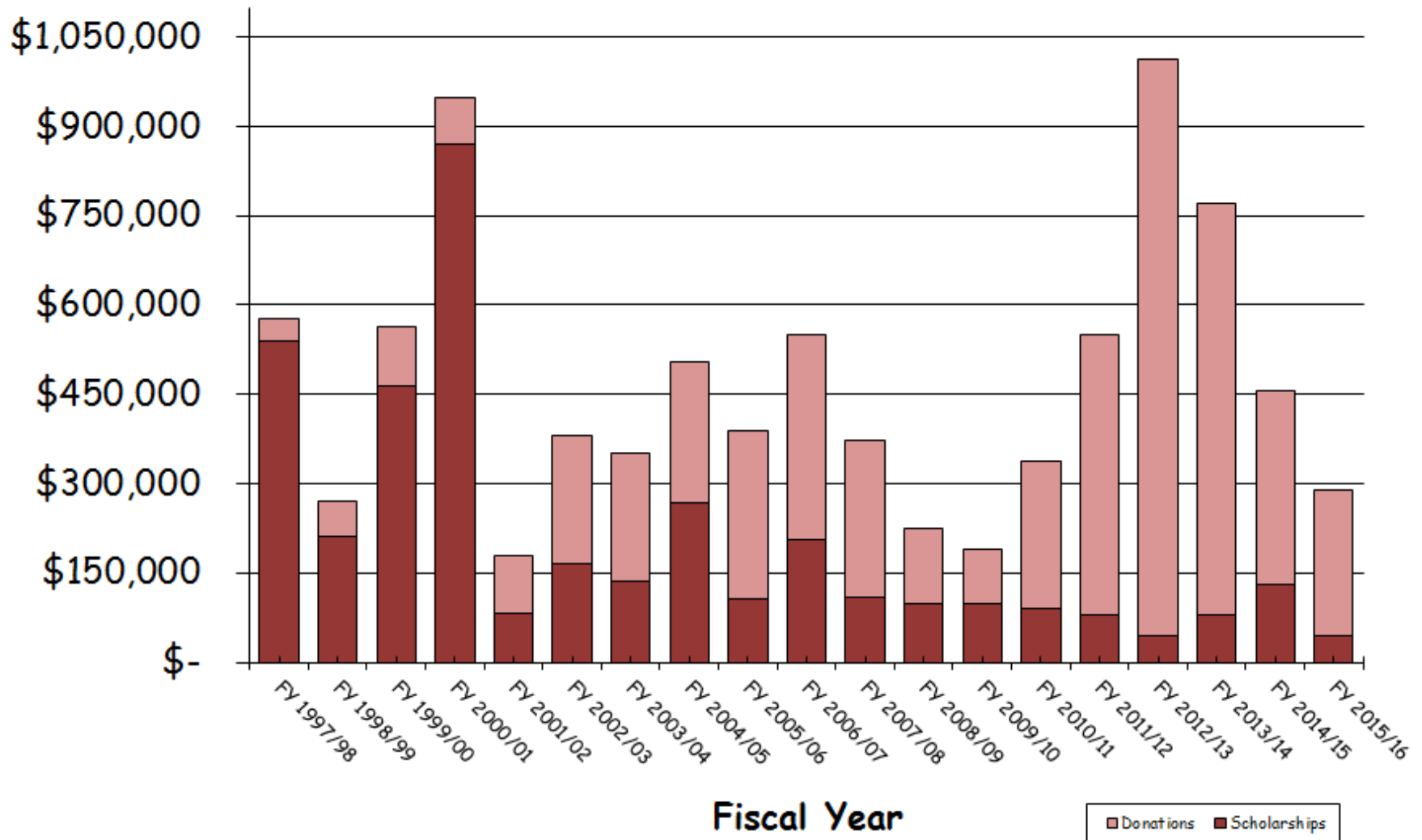
\$118 million



Scholarship & Donations Funding

FY 1995 to FY 2016

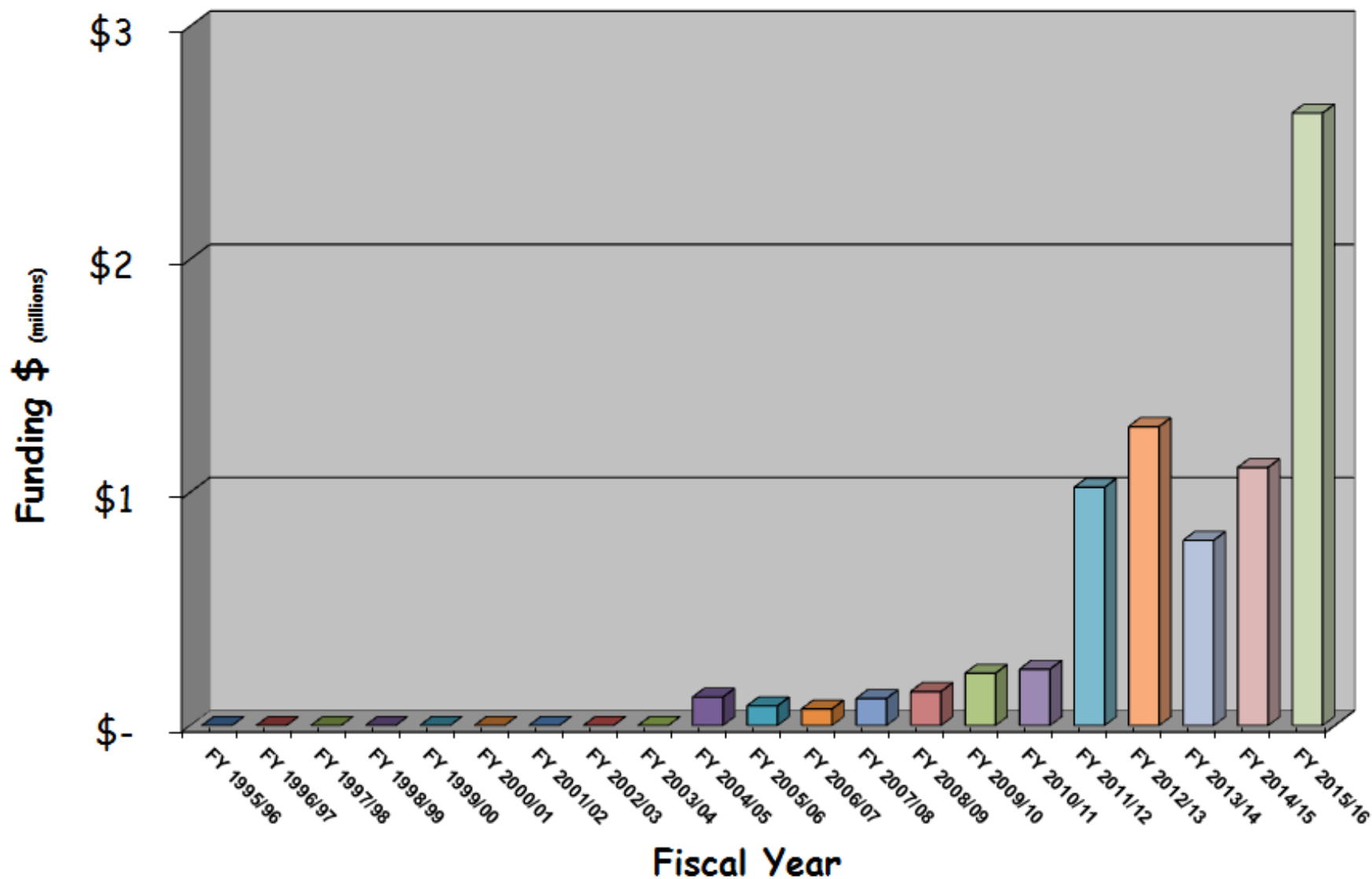
\$11.5 million



Fee for Service Revenue

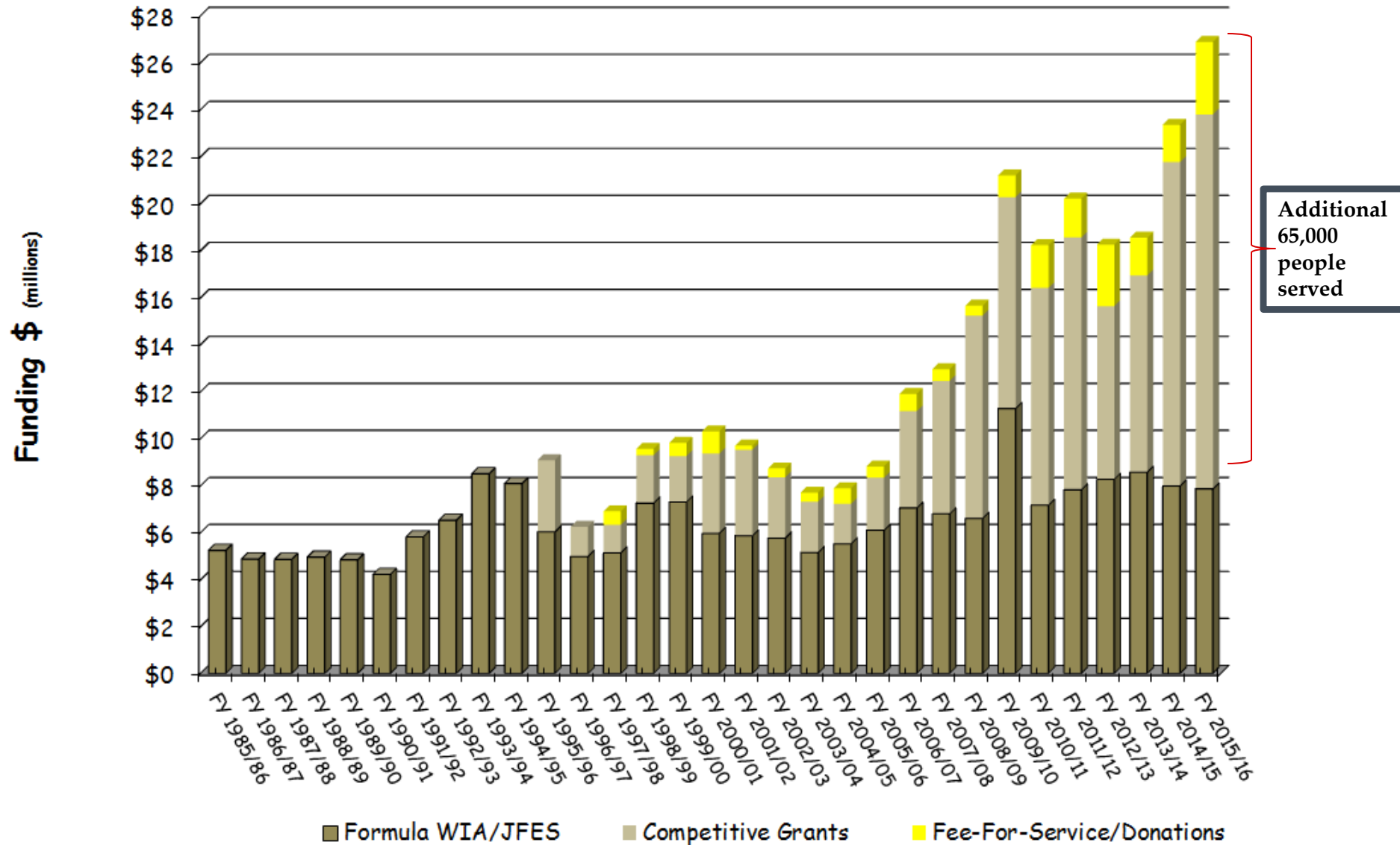
FY 1995 to FY 2016

\$7.8 million



The WorkPlace
All Sources Funding
FY 1985 to FY 2016
\$339 million

General & Admin
Costs FY 2015
@ 7.2 %



How do we measure ourselves ?

We ask:

How many people can we put on a path to the Middle Class?

Is the person better off after participating in our program?

Each program measures various benchmarks:

- Credentials
- Job Placement (Entered Employment)
- Wage Gains
- Retention

Program	Place of Employment	Position	Hourly Wage
P2E	Brillio	Creative Design Specialist	\$73.53
P2E	BNP Paribas	Project Manager	\$55.29
WIOA DW	UIL Holdings	Management Analyst	\$50.00
P2E	Thrive Tek Inc.	VM Ware Administrator	\$45.00
Step-Up	Property Protection Consulting	Technician	\$40.00
Step-Up	WC McBride Electrical Contractors	Project Manager	\$35.00
P2E	Kaman Precision Products	Organizational Dev. Specialist	\$43.00
WIOA DW	City of Bridgeport	Printing Press Operator	\$29.74
H1B	Bridgeport Hospital	Staff Nurse	\$29.50
JFES	Barr & Morgan Law Firm	Paralegal	\$28.00
H1B	Stamford Pediatrics	Registered Nurse	\$23.00
H1B	Jeunesse	Project Manager	\$22.60
EnvironmentalWorks	New England Infrastructure	Laborer	\$22.00
EnvironmentalWorks	Gault Energy	Laborer	\$20.00
WIOA Adult	Chapin and Bangs Co.	Delivery Driver	\$20.00
WIOA Adult	Lily Transport	Truck Driver	\$20.00
H1B	Optimus Health Care	CPC Charge Entry	\$19.71
JFES	Compass Two, LLC	Cook	\$19.63
EnvironmentalWorks	City of Westport	Site Supervisor	\$18.00
EnvironmentalWorks	Standard Demolition	Laborer	\$13.50
EnvironmentalWorks	Bridgeport Energy	Laborer	\$13.25
H1B	Milford Health & Rehab Center	Certified Nurse Aide	\$13.00
HVRP	Boston Market	Maintenance Worker	\$12.00
HVRP	Macy's	Flow-Team	\$10.25
HVRP	Personal Touch	Detailer	\$10.00